

**Gira HomeServer**  
0529 00

**Gira FacilityServer**  
2075 00





# GIRA

## Contents

<b>1</b>	<b>Introduction .....</b>	<b>5</b>
1.1	General Information .....	6
1.2	Operating devices .....	7
1.3	System requirements .....	7
1.4	Area of application .....	7
1.5	Specifics .....	8
1.6	Installation .....	8
<b>2</b>	<b>RemoteVisu .....</b>	<b>9</b>
2.1	Sample project .....	9
2.1.1	Scope of sample project.....	9
2.2	Start-up.....	10
2.2.1	Setup .....	10
2.2.2	Page size .....	11
2.2.3	Popup page .....	12
2.2.4	Transferring a project .....	12
2.3	Starting visualisation .....	13
2.3.1	Start files.....	13
2.3.2	Variants B1, B2 parameters.....	15
2.3.3	Cookies .....	15
2.4	Media Center .....	16
2.4.1	RemoteVisu.mcl .....	16
2.4.2	Install_RemoteVisu.....	17
2.4.3	Uninstall_RemoteVisu .....	17
2.4.4	Button assignment .....	17
2.5	Safety .....	20
2.6	Reconnect and Refresh .....	20
2.7	Login variants .....	21
2.7.1	Login type 1.....	21
2.7.2	Login type 2.....	21
2.7.3	Login type 3.....	21
2.7.4	Login behaviour.....	22
2.8	Login mask, fields .....	22
2.8.1	User name .....	22
2.8.2	Password .....	22
2.8.3	Design .....	22
2.8.4	Refresh time .....	23
2.8.5	Save information .....	23
2.8.6	Log in.....	23
2.8.7	5th parameter.....	23
2.9	Installed files.....	24

2.10	Graphics files.....	24
2.10.1	ax0.gif .....	24
2.10.2	num_bg.png.....	24
2.10.3	mark1.png.....	25
2.10.4	mark2.png.....	25
2.10.5	hide3.png.....	25
2.10.6	hide4.png.....	25
2.10.7	Selection of marking .....	25
2.11	Javascript files.....	26
2.12	HTML files.....	26
2.13	Login masks .....	26

## 1. Introduction

The RemoteVisu provides you with an operating interface for the HomeServer and FacilityServer that is optimally matched to the use of the visualisation on the Windows Media Center and Internet Explorer.

Operation is carried out with the Media Center remote control. As an option, the Windows Media Center can be operated with an XBox 360 and the wireless XBox 360 wireless controller (see below).

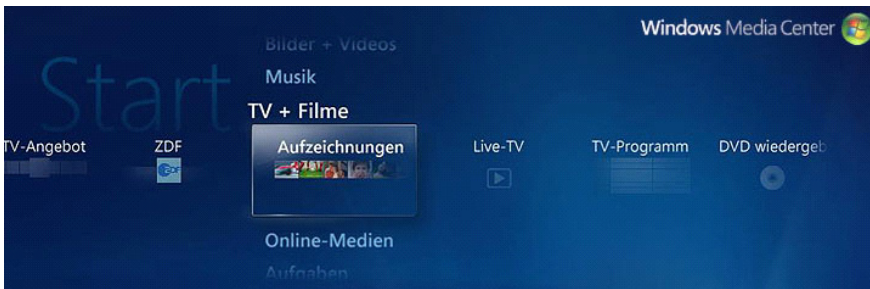


Figure 1.1: Windows Media Center for Windows XP or Windows Vista



Figure 1.2: Media Center - Section with four integrated HS links

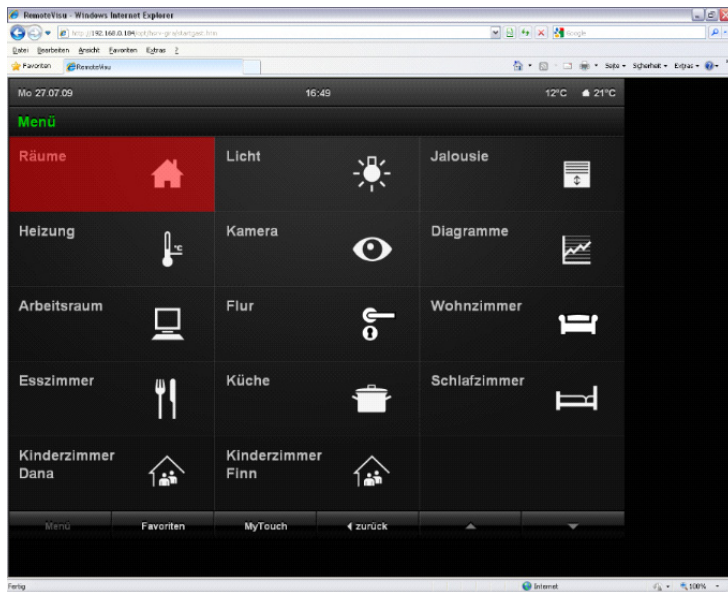


Figure 1.3: Resolution 1680x1050: Internet Explorer (without upstream MCE). The browser should be operated in the full-screen mode.

## 1.1 General Information

The information, data, values, etc. contained in these documents may be changed without prior notification. The illustrations are also non-binding.

Subject to technical modifications!



**Note: Up-to-date information is available on the Gira website.**

As the software for the device purchased by you is being continuously further developed and updated, information in this manual may no longer be up-to-date.

Current product information is always available on the Gira website:

[www.gira.com](http://www.gira.com)

Current software updates and documentation for your product are also available.

### 1.2 Operating devices

RemoteVisu can be operated using the following operating devices:

- MS Media Center IR Remote Control for the Windows Media Center or only for the Internet Explorer
- XBox 360 wireless controller As an option, the Windows Media Center of a PC can be operated with an XBox 360.

### 1.3 System requirements

The following is required for using the RemoteVisu:

- HomeServer or FacilityServer.
- Expert software from Version 2.2.071114 (from 14/11/2007 or newer)
- HomeServer or FacilityServer firmware from Version 2.2.071114 (from 14/11/2007 or newer)
- Windows Media Center (on Windows XP or Windows Vista) or Internet-Explorer on the operating device

### 1.4 Area of application

The RemoteVisu expands the existing HomeServer/FacilityServer visualisation functions. Any other use of the device and software is not permitted. Gira shall assume neither legal responsibility nor a warranty of any kind for errors and damage resulting from the improper use of the device and/or the related software.

The areas **Menu**, **Query** and **Seven-day time clock mask** are not included in the scope of the application.

### 1.5 Specifics

The RemoteVisu comprises the option of defining different sized visualisation pages.

A visualisation page can be opened as a popup mask.

No additional design is required for the RemoteVisu in a project. The layout is determined by the visualisation program.

### 1.6 Installation

The RemoteVisu is a component of the HomeServer/FacilityServer Expert software and is automatically installed with it.



## 2. RemoteVisu

### 2.1 Sample project

A sample project is included with the HomeServer/FacilityServer Expert software. The name of the sample project is:

**sample-yyyymmdd-rv.de**

Here "yyyymmdd" stands for the date of the respective file.

#### 2.1.1 Scope of sample project

Two resolutions can be selected in the sample project:

1680 x 1050 and 1024 x 768.

The following visualisation masks are available:

- Graph overview
- Camera image overview
- Ground plan of grounds with light, blind and courtyard gate
- Ground floor, switchable elements: light, blind, temperature, universal time clock (UTC)
- Upper floor, switchable elements: light, blind, temperature, temperature, universal time clock

The following popups are available:

- Blind control
- Value entry
- Graphs
- Camera images
- UTC
- Camera archive
- Buddy list
- Message archive
- Holiday calendar
- Public holiday calendar
- Date and time entry



**Note: Design MCE1680.**

The design MCE1680 used in the sample project is only suitable for working with the RemoteVisu.

The elements used in other designs (e.g. gira1024v) are not present here.

## 2.2 Start-up

### 2.2.1 Setup

Existing projects can be expanded with the HomeServer AjaxVisu without an additional design. Open the menu item **Setup in the Expert**. Create the following two symbols in the **Project settings** mask (see Image 2.1). The image ID is decisive for the definition.

- Image ID: XXPAGE
- Image ID: XXPOPUP

The symbols can be assigned any name. However, using expressive names is advisable.

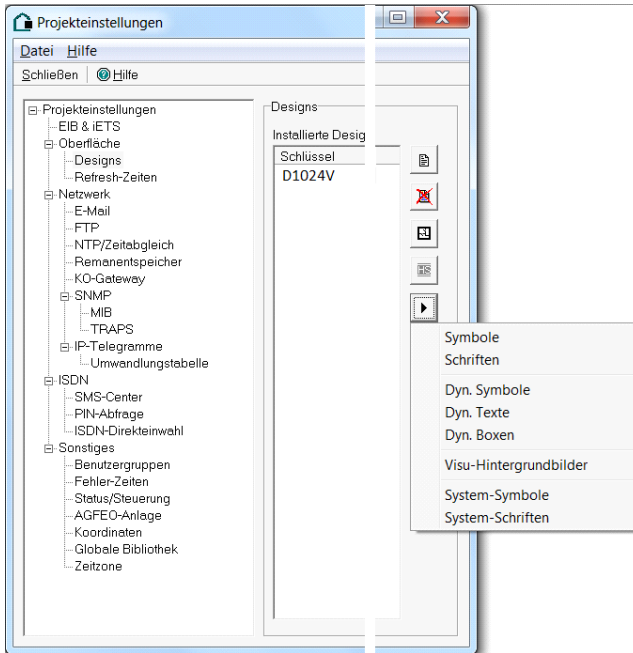


Figure 2.1 Creating two symbols under "Project settings"

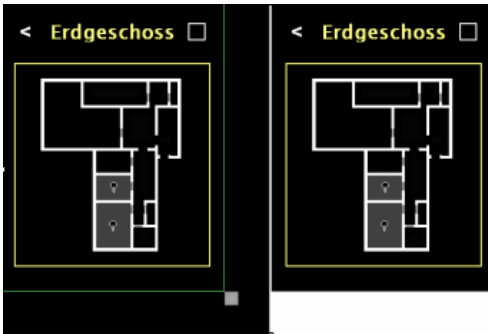


**Note: Do not create by copying or duplicating.**

Please note that the two symbols cannot be created by copying or duplicating another symbol!

### 2.2.2 Page size

If the area of a standard visualisation page is to be limited, this is possible with the XXPAGE symbol. If this symbol is set on a visualisation page, it defines the lower right-hand corner. All information which lies outside the limited area is not shown.



**Figure 2.2** Example of setting page size

Create the symbol as described above:

Image ID: XXPAGE

Designation (name): "RemoteVisu\_page\_size".

The symbol can be used as an option. If this symbol is not used, the browser shows the entire area of the visualisation page.

Using a small, square symbol is advisable. The upper left-hand corner of the symbol defines the page size.

The green frame on the left of the screen (see Image 2.2) shows the area defined by the upper left-hand point of the small grey XXPAGE symbol. The right of the screen shows the result visible in the RemoteVisu.

The size and colour of the XXPAGE symbol are not significant, as it of course lies outside the defined display area.

Only **onesymbol** (either exactly one XXPOPUP or exactly one XXPAGE) may be created per page!

### 2.2.3 Popup page

The RemoteVisu offers popup visualisation pages.

If a visualisation page is to be laid over the visualisation page to be called (popup), it is possible with the XXPOPUP symbol. If this symbol is set on a visualisation page, it defines the lower right-hand corner and at the same time it defines this page as a popup. All information which lies outside the limited area is not shown. The page is laid centred over the existing page when it is called.



**Figure 2.3 Creating a symbol for a popup Left: Draft of popup page. Right: Called popup in the visualisation**

Create the symbol as described above:

Image ID: XXPOPUP

Designation (name): "RemoteVisu\_PopUp".

Using a small, square symbol is advisable. The upper left-hand corner of the symbol defines the page size.

A mask (e.g. message archive) can be called from a popup page. However, it is not possible to call another visualisation or popup page within a popup page.

The previous page can be accessed with the "Return button" (see below).

With a popup page it is possible, for example, to realise device-specific popups, e.g. a popup for blind control.

The later popup can be seen together with the small red XXPOPUP symbol, which limits the area to be shown, on the left of the screen (see Image 2.3). The result which can then be seen as a popup in the RemoteVisu is shown on the right.

The size and colour of the XXPOPUP symbol are not significant, as it of course lies outside the defined display area.

Only ONE symbol (either exactly one XXPOPUP or exactly one XXPAGE) may be created per page!

### 2.2.4 Transferring a project

The project must always be completely (images+data+voice messages) transferred to the HomeServer or FacilityServer.

## 2.3 Starting visualisation

The RemoteVisu is started by calling one of the following pages in the Internet Explorer:

- [http://IP\\_DES\\_HS-FS/opt/hsrv-gira\\_en/startgast.htm](http://IP_DES_HS-FS/opt/hsrv-gira_en/startgast.htm)
- [http://IP\\_DES\\_HS-FS/opt/hsrv-gira\\_en/start2.htm](http://IP_DES_HS-FS/opt/hsrv-gira_en/start2.htm)

The two variants differ from each other in the user and the resolution used.

### 2.3.1 Start files

startguest.htm starts the project with the user 'u1024' and the resolution 1024x768.

start2.htm starts the project with the user 'u1680' and the resolution 1680x1050.

The file **startguest.htm** is entered as standard In the RemoteVisu.mcl file included in the sample project.

The explanations on the start files are provided using the example of the file **startguest.htm**.

The startguest.htm file only differs in the line of start2.htm marked with a blue font.

Code listing using the file **startguest.htm** as an example :

#### Line Code

```
1  <html>
2  <head>
3      <title>HomeServer AjaxVisu</title>
4      <script type="text/javascript" src="js/keys.js"></script>
5      <script type="text/javascript" src="js/ajax.js"></script>
6      <style class="text/css">
7          body { background-color:#000000; }
8          div {}
9          img {}
10         input {padding:0px; margin:0px; font-size:24pt; }
11     </style>
12 </head>
13 <body scroll="no"onkeydown="onRemoteEvent(window.event. keyCode)">
14     <!-- Visu -->
15     <div id="xbase" style="position:absolute; top:0px; left:0px;
16         width:1024px; height:768px; overflow:hidden;
17         border:0px; border-color:red; border-style:solid;">
18     </div>
19     <!-- Marking -->
```

```
19     <div id="xmark" style="position:absolute; top:0px;
    left:0px; visibility:hidden;">
20     
21 
22 </div>
23
24 <!-- Reconnect -->
25 <div id="xreconnect" style="position:absolute; top:0px;
    left:0px; width:1024px; height:768px; overflow:hidden;
    text-align:center; visibility:hidden;
    background-color:red;">
26     Restore connection....<br/>
27     <span id="tryCnt">*</span><br/>
28     <span id="tryState">&nbsp;</span>
29 </div>
30
31 <!-- Start -->
32 <script language="JavaScript">
33     startClientEx('u1024', 'u1024', 'MCE1680', 'R1', 0);
34 </script>
35 </body>
36 </html>
```

## Explanations

The explanations refer to the setting options in this file. It is assumed that the standard HTML commands are known.

Line	Explanation
3	Page heading or tab heading in the browser.
6 to 11	CSS settings for Login and Reconnect masks.
7	Background settings. Current: colour.
15	<div> "xbase". This container contains the entire visualisation.
19 to 22	<div> "xmark" with img "xmarkimg1" and "xmarkimg2". Of the images entered here ("img/mark1.png" and "img/mark2.png"), exactly one must always have the option "visibility:hidden". The respective other image is then used for the click display.
25	<div> "xreconnect". Container for the Reconnect-Display mask.
32 to 34	The <span>'s with the IDs "tryCnt" and "tryState" must be present, as otherwise it is possible to design freely with HTML here.
33	Client is started with JavaScript. Some things can be set:  Running the client. In this line the start files differ from each other.

The specification of the design "MCE1680" in the startguest.htm file is not a typing error, as no separate design is used for the resolution 1024x768!

The sizes of the masks are limited by the XXPAGE symbol instead.

### 2.3.2 Variants B1, B2 parameters

The parameters can be adjusted.

1. User
2. Password
3. Design abbreviation
4. Refresh time
5. Login behaviour

A detailed description of the fields is provided in Chapter "Login mask, fields" on page 22.

**Example** of line 33:

```
startClientEx('u1024', 'u1024', 'mce1680', 'R1', 0);
```

### 2.3.3 Cookies

If you log in with one of the B variants, all cookies are deleted, i.e. during next login with Variant A, all data must be re-entered.

## 2.4 Media Center

The files for integrating the RemoteVisu in the Windows Media Center are contained in the delivery scope of the sample project:

- RemoteVisu.mcl
- Install\_RemoteVisu.cmd
- Uninstall\_RemoteVisu.cmd

### 2.4.1 RemoteVisu.mcl

The RemoteVisu.mcl file contains the necessary data for the installation. In the line which begins with "<entrypoint" (coloured red), you must make the specific adjustments for your HomeServer.

**url:** Here you enter an address as described in the point Internet Explorer. You can also choose between the following variants:

- [http://IP\\_DES\\_HS-FS/opt/hsrv-gira\\_en/startgast.htm](http://IP_DES_HS-FS/opt/hsrv-gira_en/startgast.htm)
- [http://IP\\_DES\\_HS-FS/opt/hsrv-gira\\_en/start2.htm](http://IP_DES_HS-FS/opt/hsrv-gira_en/start2.htm)

**title:** Assign a title to the call symbol, e.g. "HS/FS RemoteVisu".

**description:** Enter a brief description on what is concerned, e.g. "HS/FS Client for RemoteVisu".

After you have made all changes to the **RemoteVisu.mcl** file and have saved these, call the **Install\_RemoteVisu.cmd** file and register the RemoteVisu in your Media Center with it. Then the HS/FS appears in the menu item **Programs**.

```
<application title="My HS"
id="{8F32B3C9-645B-45F6-BA93-9D20ACB476BA}"
CompanyName="Gira, Giersiepen GmbH + Co KG" sharedviewport="true">
```

```
<entrypoint id="{E186AD7C-F9B8-45a3-9CA9-BE4C9C50AA08}"
url="http://192.168.0.11/opt/hsrv-gira_en/startguest.htm"
title="HS/FS RemoteVisu"
description="HS/FS Client for RemoteVisu"
ImageUrl=".\\Remotevisu.png">
```

```
<category category="More Programs"/>
</entrypoint>
</application>
```



If several HomeServer are to be integrated, the two IDs (coloured blue) must be changed with any desired unique code. With one device, the IDs can remain unchanged.

#### 2.4.2 Install\_RemoteVisu

The file Install\_RemoteVisu.cmd:

```
%windir%\ehome\RegisterMCEApp.exe /allusers RemoteVisu.mcl
pause
```

This installs a menu item in the Media Center.

#### 2.4.3 Uninstall\_RemoteVisu

The file Uninstall\_RemoteVisu.cmd:

```
%windir%\ehome\RegisterMCEApp.exe /u /allusers RemoteVisu.mcl
pause
```

This removes the Media Center menu item again.

#### 2.4.4 Button assignment

When using the RemoteVisu the buttons of the operating devices are assigned as follows:

Mask	Function	Button	Joystick
<b>Value entry</b>	0...9	0...9	Up/Down
	C	Left	Left
	New number		Right
	Save	Back/OK	Back/OK
	Plus/Minus	Replay	Replay
	Comma	Skip	Up/Down
	Cancel	C	C/Cancel

Mask	Function	Button	Joystick
<b>Message archive</b>	Page +	Down	Down
	Page -	Up	Down
	Latest entry	Left	Left
	Oldest entry	Right	Right
	Close	Back	Back

Mask	Function	Button	Joystick
<b>Date + Time</b>	0...9	0...9	Up/Down
	Navigation	Left/Right	Left/Right
	Save	Back/OK	Back/OK
	Cancel	C	C/Cancel

Mask	Function	Button	Joystick
<b>Buddy</b>	Page +	Down	Down
	Page -	Up	Up
	Latest entry	Left	Left
	Oldest entry	Right	Right
	Close	Back/C	Back/C

Mask	Function	Button	Joystick
<b>Camera archive</b>	Image forward	Down	Down
	Image back	Up	Up
	Latest image	Left	Left
	Oldest image	Right	Right
	Close	Back/C	Back/C

Mask	Function	Button	Joystick
<b>Public holiday calendar</b>	Navigation	Lt/Rt/Up/Dn	Lt/Rt/Up/Dn
	Select	OK	OK
	Save	Back	Back
	Cancel	C/Cancel	C/Cancel

Mask	Function	Button	Joystick
<b>Holiday calendar</b>	0...9	0...9	Up/Down
	Navigation	Left/Right	Left/Right
	Deactivate/Activate	Skip	Skip
	Save	Back	Back
	Cancel	C	C/Cancel

Mask	Function	Button	Joystick
<b>Universal time clock (UTC)</b>	Event +	Up	Down
<b>Start page</b>	Event -	Down	Down
	Edit event	OK	OK
	TCL On/Off	Skip	Skip
	New event	Right	Right
	Close	Back/C	Back/C

Mask	Function	Button	Joystick
<b>Universal time clock (UTC)</b> <b>Edit</b>	Change date	OK	OK
	Change date type	<>	<>
	Change time	OK	OK
	Change time type	<>	<>
	Filter	<>	<>
	Action	<>	<>
	Remove	Replay	Replay
	Save	Back	Back
	Cancel	C	C/Cancel

Mask	Function	Button	Joystick
<b>Universal time clock (UTC)</b>	Mark	OK	OK
	Navigation	Lt/Rt/Up/Dn	Lt/Rt/Up/Dn
<b>Days of week</b>	Back	Back	Back

Mask	Function	Button	Joystick
<b>Universal time clock (UTC)</b> <b>Single day</b>	0...9	0...9	Up/Down
	Navigation	Left/Right	Left/Right
	Save	Back	Back
	*	Up/Down	Up/Down

Mask	Function	Button	Joystick
<b>Universal time clock (UTC)</b> <b>Period</b>	0...9	0...9	Up/Down
	Navigation	Left/Right	Left/Right
	Save	Back	Back

Mask	Function	Button	Joystick
<b>Universal time clock (UTC)</b> <b>Time***</b>	0...9	0...9	Up/Down
	Navigation	Left/Right	Left/Right
	Save	Back	Back

2.5 Safety

As with the B variants the login data are saved unencrypted, we only recommend using this variant for users, who only have an internal access authorisation. Otherwise it is possible for someone to obtain access to this file and misuse the data.

On the other hand, Variant A can be used without limitations, as in this case no data are saved in unprotected areas and at least the password is requested during each login and during each reconnect.

2.6 Reconnect and Refresh

If the connection to the HS/FS is disconnected, e.g. due to restarting the HS/FS, a reddish information window with the heading "RemoteVisu" and a note that an attempt is being made to re-establish the disconnected connection are displayed. This attempt at reconnection is repeated at intervals that are determined by the refresh time.

A number of asterisks are shown in the information window, each of which stands for a reconnection attempt already carried out.

As soon as the connection has been restored, the information window disappears.

If 'Variant A' described in the chapter "Starting visualisation" is used to log in, then the Login mask is shown again after a connection has been established.

When using one of the 'B variants', the user is then on the page again that was active before the connection failed.

Exception: Popup pages. The user is on the page again from which the popup page was called.

## 2.7 Login variants

There are three variants for logging in:

- Login via login mask
- Data incl. password in HTML start page
- Data without password in HTML start page

URL for login:

`http://IP_DES_HS-FS/opt/hsrv-gira_en/[start page]`

Login type	Displayed start page for login	Enter user data	Enter password
1	startguest.htm start2.htm / Last page visited	No	No
2	startguest.htm start2.htm / Last page visited	No	Yes

### 2.7.1 Login type 1

Login via login mask.

The login is carried out with the Login mask. Following a successful login, the start page defined for the user always appears.

See also "Login mask, fields" on page 22.

### 2.7.2 Login type 2

Direct login including password.

All required user data are noted in the Start page to be called. It can be parameterised whether the visualisation start page or the last visualisation page visited is to be shown following a successful login.

### 2.7.3 Login type 3

Direct login without password.

All required user data, except the password, are noted in the start page to be called. When the start page is called, a password entry mask appears. It can be parameterised whether the visualisation start page or the last visualisation page visited is to be shown following a successful login.

#### 2.7.4 Login behaviour

The 5th parameter in startguest.htm, start2.htm.

This parameter defines which visualisation page the user lands on following the login. There is no input field for this parameter on the Login mask. It must be changed directly in the startguest.htm or start2.htm.

- 0 = Visualisation start page
- 1 = Last visualisation page visited

### 2.8 Login mask, fields

The Login mask contains the fields and buttons listed in the following.

The data are created in the Expert software.

**Example** from the startguest.htm file: `startClientEx('u1024', 'u1024', 'MCE1680', 'R1', 0);`

#### 2.8.1 User name

Input field, in example **'u1024'**. Observe use of uppercase/lowercase characters!

User name for the login on the HomeServer or Facility Server.

This user is assigned the start page in the visualisation.

#### 2.8.2 Password

Input field, in example **'u1024'**. Observe use of uppercase/lowercase characters!

Password for the login on the HomeServer or Facility Server.

#### 2.8.3 Design

Input field, in example **'RMCE1680'**.

Abbreviation.

Indicates which design or which visualisation page is to be displayed. Otherwise it has no further effect on the RemoteVisu.

#### 2.8.4 Refresh time

Input field, in example **R1**. Abbreviation.

If a change is caused with an element in the visualisation, for example a light is switched on, an automatic refresh of the page (the status of the object concerned is determined and shown on the visualisation) is carried out at intervals that double each time. This takes place until a period of time has passed which was entered under the refresh time in the Expert software.

#### Example:

5 minutes (= 300 seconds) are entered as a refresh time. Then an automatic refresh is carried out after 2, 4, 8, 16, 32, 64, 128 and 256 seconds.

#### 2.8.5 Save information

Checkbox. If this checkbox is activated, the user name and password, as well as all other settings are saved on the device as a cookie

#### 2.8.6 Log in

Button. By clicking on this button, the user logs in on the HomeServer or FacilityServer with the information previously entered and starts the visualisation following a successful login process.

#### 2.8.7 5th parameter

There is one additional parameter in the **startguest.htm** file which, however, has no input field on the Login mask.

## 2.9 Installed files

The details of the RemoteVisu are described in the following. These files can be adapted to the user's own needs (colours etc.) with a minimal knowledge of HTML.

The installed files are divided into several sections, each of which can be found in a separate subdirectory.

Sections:

- Graphics files, see Chapter "Graphics files", page 24.
- Javascript files, see Chapter "Javascript files", page 26.
- HTML files, see Chapter "HTML files", page 26.

## 2.10 Graphics files

The graphics files are stored in the **img** subdirectory of the **hsrv-gira\_en** folder.

The files are used to enable, to prevent or only to display certain actions (e.g. clicks).

The files are expanded or compressed in the horizontal and vertical direction in accordance with the required area.

### 2.10.1 ax0.gif

Transparent area, i.e. it has no colour and is therefore 100 % transparent.

This file is used to be laid over all visualisation elements defined as clickable. It makes functioning buttons out of purely graphic elements.

### 2.10.2 num\_bg.png

Only partially transparent, red-coloured area, i.e. it is not completely transparent.

This area is used to mark the number currently selected for all numerical entries.



### 2.10.3 mark1.png

Only partially transparent, red-coloured area, i.e. it is not completely transparent.

This area is used to mark the active element currently selected during navigation.

### 2.10.4 mark2.png

An area only partially transparent, provided with a small symbol.

Alternative to mark1.png. This area is used to mark the active element currently selected during navigation.

### 2.10.5 hide3.png

Semi-transparent (grey) full-screen background, which is underlaid after a system mask (e.g. TCL, value entry, etc.) is called. This avoids clicks on the background.

### 2.10.6 hide4.png

Semi-transparent (grey) full-screen background, which is underlaid after a visualisation popup page is called. This avoids clicks on the background.

### 2.10.7 Selection of marking

In the start files, it can be specified whether mark1.png or mark2.png is to be used.

Procedure:

- Search the "img" element with the ID "xmarkimg2"
- Search in the "img" element for the "src" attribute
- Enter one of the following values after the "=" character:  
"img/mark1.png"  
"img/mark2.png"
- Make sure that there is a blank space after the rear quotation marks and the next character in the line
- Save the file.

### 2.11 Javascript files

The Javascript files are stored in the **js** subdirectory of the **hsrv-gira\_en** folder.

The files are used to breathe life into the HTML files, as it were. These files contain the program code which, for example, turns a drawn button or the transparent area which lies over it into a button that actually reacts to clicking.

The files currently used are called **ajax.js** and **keys.js**.

### 2.12 HTML files

The HTML files are stored in the **tpl** subdirectory of the **hsrv-gira\_en** folder.

These files define the appearance of the predefined visualisation masks. With them the system integrator can make his/her own adjustments to the mask design.



**Note: Using the universal time clock.**

The seven-day time clock is not included with the RemoteVisu.



**Note: Changed entry option.**

The Graph and Camera masks in the RemoteVisu are not required (any longer), as the same thing and even more in a larger range of variations can be achieved via embedding in the visualisation area.



**Note: Changed entry option.**

Some masks of the universal time clock are no longer required in the RemoteVisu, as use has changed compared to the default view. The complete functionality has nevertheless been retained.

### 2.13 Login masks

The two files named here are called by the device depending on the Start page used.

Login mask 1 (All information): .HTM file = pop\_login1.htm

Login mask 2 (Password only): .HTM file = pop\_login2.htm

The masks listed are individual masks and therefore require only one .HTM file each.



Gira  
Giersiepen GmbH & Co. KG  
Electrical installation  
systems

Industriegebiet Mermbach  
Dahlienstraße  
42477 Radevormwald

P.O. Box 12 20  
42461 Radevormwald

Germany

Phone +49 (0) 2195 - 602-0  
Fax +49 (0) 2195 - 602-339

[www.gira.com](http://www.gira.com)  
[info@gira.com](mailto:info@gira.com)

# GIRA